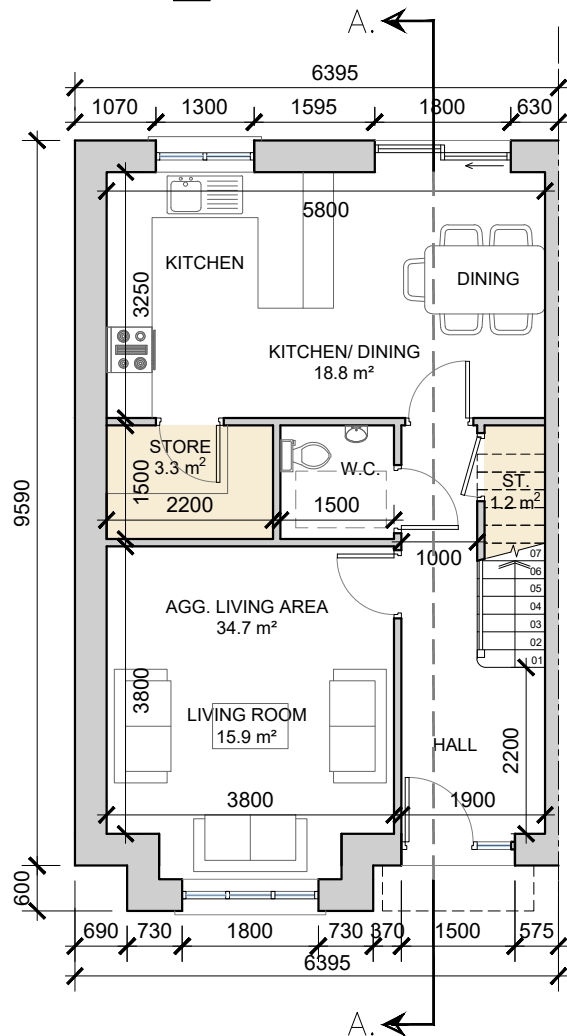


HOUSE TYPE C2

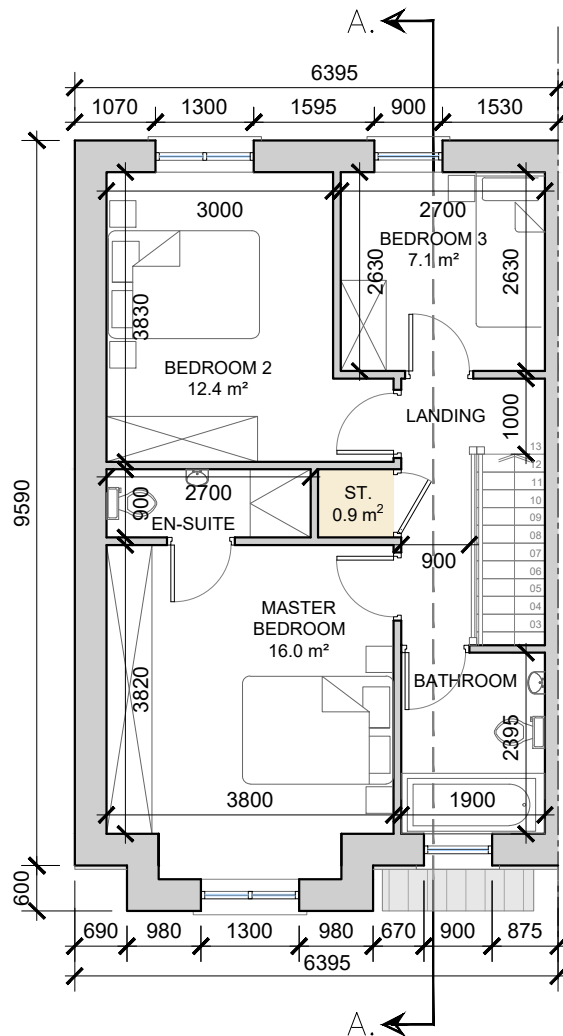
3-bed Townhouse (5 person)

AREA: 104.4 SQ.M.
1,124 SQ.FT.

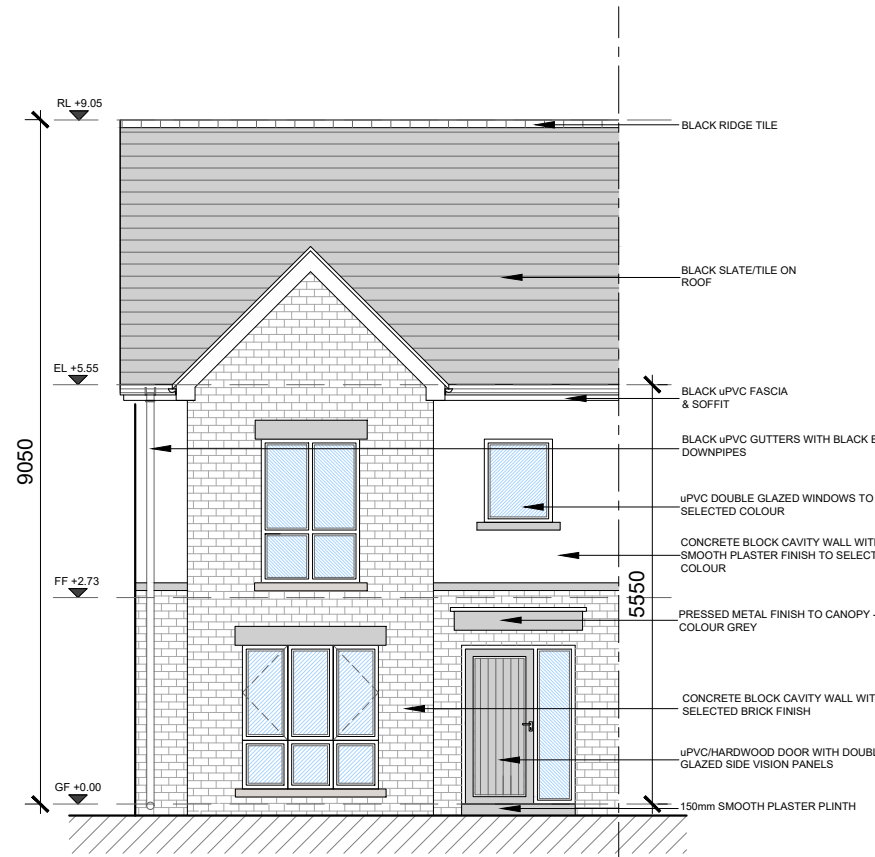
STORAGE total - 5.4 sq.m.



Ground Floor Townhouse
 SCALE 1:100 @ A3



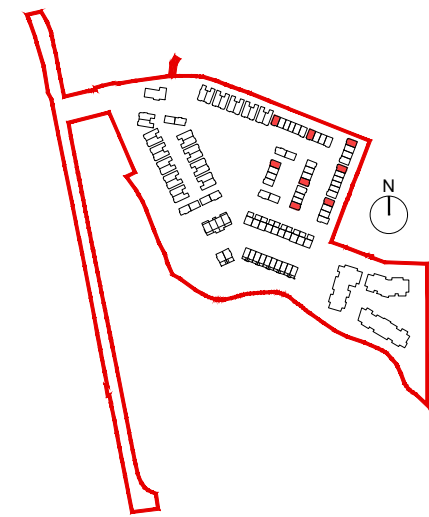
First Floor Townhouse
 SCALE 1:100 @ A3



Front Elevation
 SCALE 1:100 @ A3

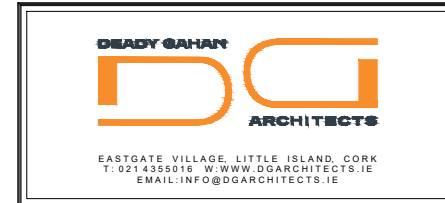


House Type C2 - Character Area 1
 See site plan (dwg no. 23049/P/003) for material locations



NOTE: POSITION OF NORTH POINT & LEVELS VARY.
 SEE SITE PLAN FOR ORIENTATION - DWG NO. 23049/P/003

date	rev	name	chk	note
07.05.24	P1	MP	EJG	ISSUE FOR PLANNING

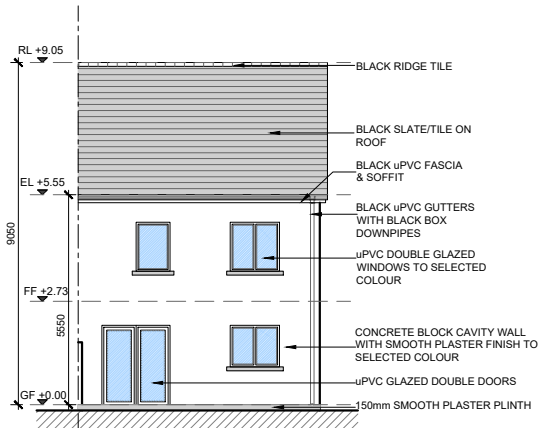


Project
 PROPOSED RESIDENTIAL DEVELOPMENT
 AT PORT ROAD, KILLARNEY, CO. KERRY

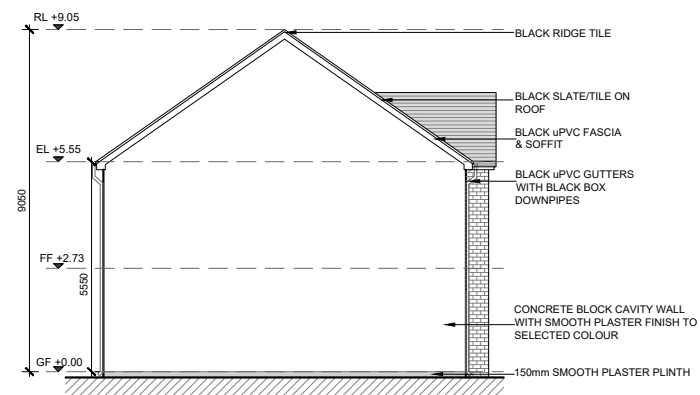
Drawing title
 HOUSE TYPE C2 - 3-BED TOWNHOUSE
 PLANS, ELEVATIONS & SECTION A-A

Scale 1:100/200 @ A3	Drawn MP	Checked EJG	Date 07.05.24
Project No. 23049	Dwg. No. 23049/P/305	Revision P1	

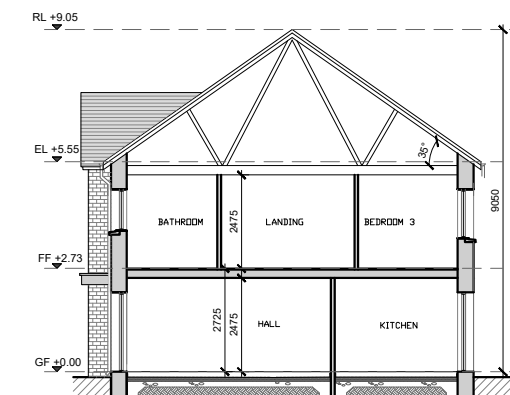
Information / Comments	Tender
Planning	Construction



Rear Elevation
 SCALE 1:200 @ A3



Side Elevation
 SCALE 1:200 @ A3



Section A-A
 SCALE 1:200 @ A3